

Madison, Wisconsin

# CITY OF MADISON

CITY ENGINEERING DIVISION  
DEPARTMENT OF PUBLIC WORKS  
PLAN OF PROPOSED IMPROVEMENT

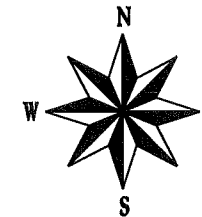
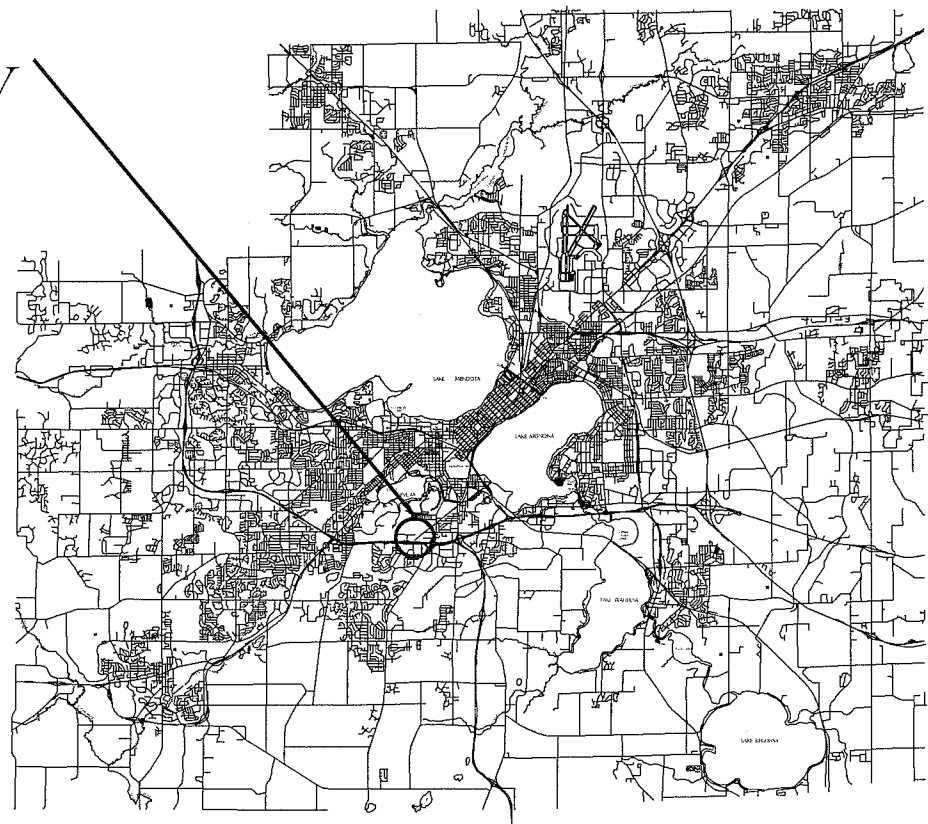
INDEX OF SHEETS

SHEET NO.	TITLE
U-1	OVERALL PLAN
S-1.0	SCREEN STRUCTURE - 3D VIEW
S-2.0	SCREEN STRUCTURE - STRUCTURAL SECTIONS
S-2.1	SCREEN STRUCTURE - STRUCTURAL DETAILS

## ARBORETUM SCREEN STRUCTURE REPAIR

CITY PROJECT NO. 10316  
CONTRACT NO. 7563

PROJECT  
LOCATION



CONVENTIONAL SIGNS

FIELD VERIFY ALL UTILITY LOCATIONS

GAS	— G —
STORM SEWER	— ST —
SANITARY SEWER	— SAN —
WATER	— W —
OVERHEAD ELECTRIC	— OH —
POWER POLE	□
HANDICAP RAMP	♿
COMBUSTIBLE FLUIDS	☠

PUBLIC IMPROVEMENT PROJECT  
APPROVED

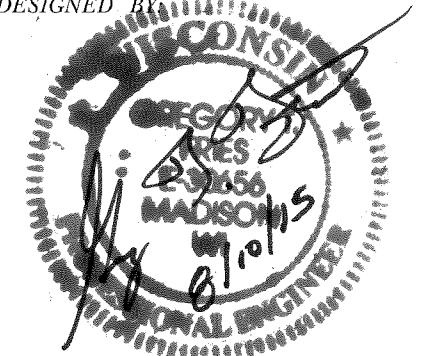
JULY 7, 2015

BY THE COMMON COUNCIL  
OF MADISON, WISCONSIN

PUBLIC IMPROVEMENT DESIGN  
APPROVED BY:

 8/11/15  
City Engineer Date

PROJECT  
DESIGNED BY:

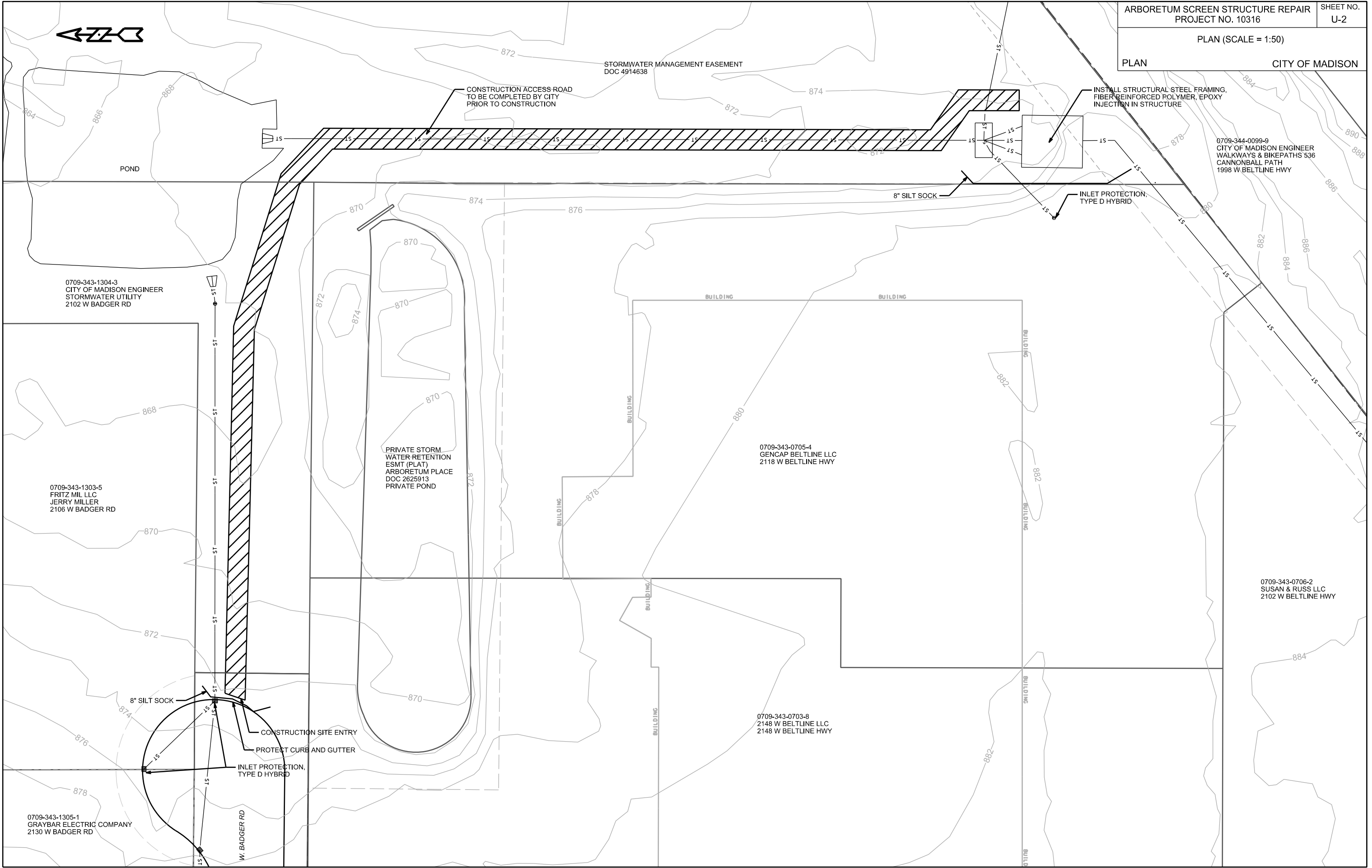


PLOT SCALE:

PLOT NAME:

REV. DATE:

ORIGINATOR: CITY OF MADISON - STREETS DIVISION



CONSTRUCTION ACCESS ROAD  
TO BE COMPLETED BY CITY  
PRIOR TO CONSTRUCTION

INSTALL STRUCTURAL STEEL FRAMING,  
FIBER REINFORCED POLYMER, EPOXY  
INJECTION IN STRUCTURE

8" SILT SOCK

INLET PROTECTION,  
TYPE D HYBRID

0709-344-0099-9  
CITY OF MADISON ENGINEER  
WALKWAYS & BIKEPATHS 536  
CANNONBALL PATH  
1998 W BELTLINE HWY

0709-343-1304-3  
CITY OF MADISON ENGINEER  
STORMWATER UTILITY  
2102 W BADGER RD

PRIVATE STORM  
WATER RETENTION  
ESMT (PLAT)  
ARBORETUM PLACE  
DOC 2625913  
PRIVATE POND

0709-343-0705-4  
GENCAP BELTLINE LLC  
2118 W BELTLINE HWY

0709-343-1303-5  
FRITZ MIL LLC  
JERRY MILLER  
2106 W BADGER RD

0709-343-0706-2  
SUSAN & RUSS LLC  
2102 W BELTLINE HWY

0709-343-0703-8  
2148 W BELTLINE LLC  
2148 W BELTLINE HWY

0709-343-1305-1  
GRAYBAR ELECTRIC COMPANY  
2130 W BADGER RD

8" SILT SOCK

CONSTRUCTION SITE ENTRY

PROTECT CURB AND GUTTER

INLET PROTECTION,  
TYPE D HYBRID

W. BADGER RD

PLOT SCALE: \_\_\_\_\_

PLOT NAME: \_\_\_\_\_

REV. DATE: \_\_\_\_\_

ORIGINATOR: CITY OF MADISON, STREETS DIVISION

- CIVIL ENGINEERING
- SURVEYING & MAPPING
- CONSTRUCTION SERVICES
- WATER RESOURCES
- PLANNING & DEVELOPMENT
- TRANSPORTATION ENGINEERING
- STRUCTURAL ENGINEERING
- LANDSCAPE ARCHITECTURE

MADISON REGIONAL OFFICE  
 161 HORIZON DRIVE, SUITE 101  
 VERONA, WISCONSIN 53593  
 608.848.5060 PHONE | 608.848.2255 FAX

MADISON | MILWAUKEE  
 KENOSHA | APPLETON  
 www.jsdinc.com

SERVICES PROVIDED TO:  
**CITY OF MADISON**

PROJECT:  
**ARBORETUM POND #3 - STRUCTURE**

PROJECT LOCATION:

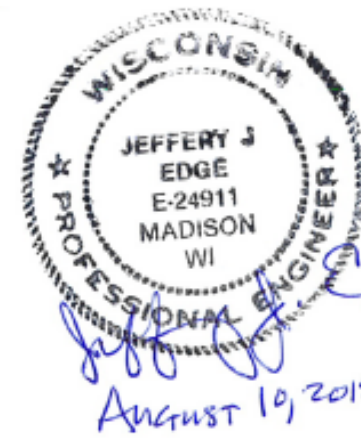
JSD PROJECT NO.: 14-6456

SEAL/SIGNATURE:

ALTHOUGH EVERY EFFORT HAS BEEN MADE IN PREPARING THESE PLANS AND CHECKING THEM FOR ACCURACY, THE CONTRACTOR AND SUBCONTRACTORS MUST CHECK ALL DETAIL AND DIMENSIONS OF THEIR TRADE AND BE RESPONSIBLE FOR THE SAME.

DESIGN: JJE  
 DRAWN: PGB  
 APPROVED: JJE

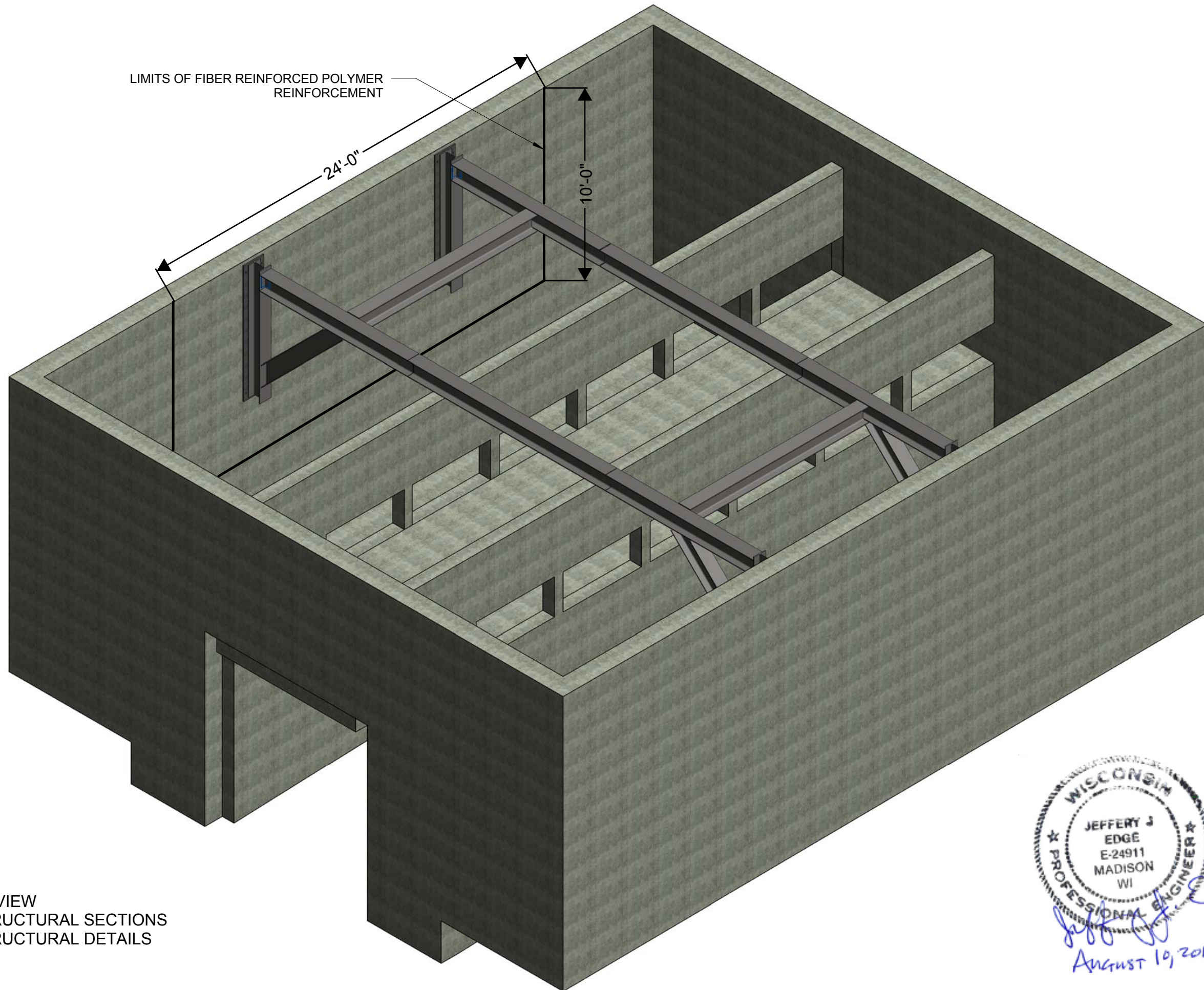
PLAN MODIFICATIONS:	DATE:



**DIGGERS HOTLINE**  
 Toll Free (800) 242-8511  
 Milwaukee Area (414) 259-1181  
 Hearing Impaired TDD (800) 542-2289  
 www.DiggersHotline.com

SHEET TITLE:  
**3D VIEW**

SHEET NUMBER:  
**S-1.0**



- S1.0 3D VIEW
- S2.0 STRUCTURAL SECTIONS
- S2.1 STRUCTURAL DETAILS

- CIVIL ENGINEERING
- SURVEYING & MAPPING
- CONSTRUCTION SERVICES
- WATER RESOURCES
- PLANNING & DEVELOPMENT
- TRANSPORTATION ENGINEERING
- STRUCTURAL ENGINEERING
- LANDSCAPE ARCHITECTURE

MADISON REGIONAL OFFICE  
 161 HORIZON DRIVE, SUITE 101  
 VERONA, WISCONSIN 53593  
 608.848.5060 PHONE | 608.848.2255 FAX

MADISON | MILWAUKEE  
 KENOSHA | APPLETON  
 www.jsdinc.com

SERVICES PROVIDED TO:  
**CITY OF MADISON**

PROJECT:  
**ARBORETUM POND #3 - STRUCTURE**

PROJECT LOCATION:

JSD PROJECT NO.: 14-6456

SEAL/SIGNATURE:

ALTHOUGH EVERY EFFORT HAS BEEN MADE IN PREPARING THESE PLANS AND CHECKING THEM FOR ACCURACY, THE CONTRACTOR AND SUBCONTRACTORS MUST CHECK ALL DETAIL AND DIMENSIONS OF THEIR TRADE AND BE RESPONSIBLE FOR THE SAME.

DESIGN: JJE  
 DRAWN: PGB  
 APPROVED: JJE

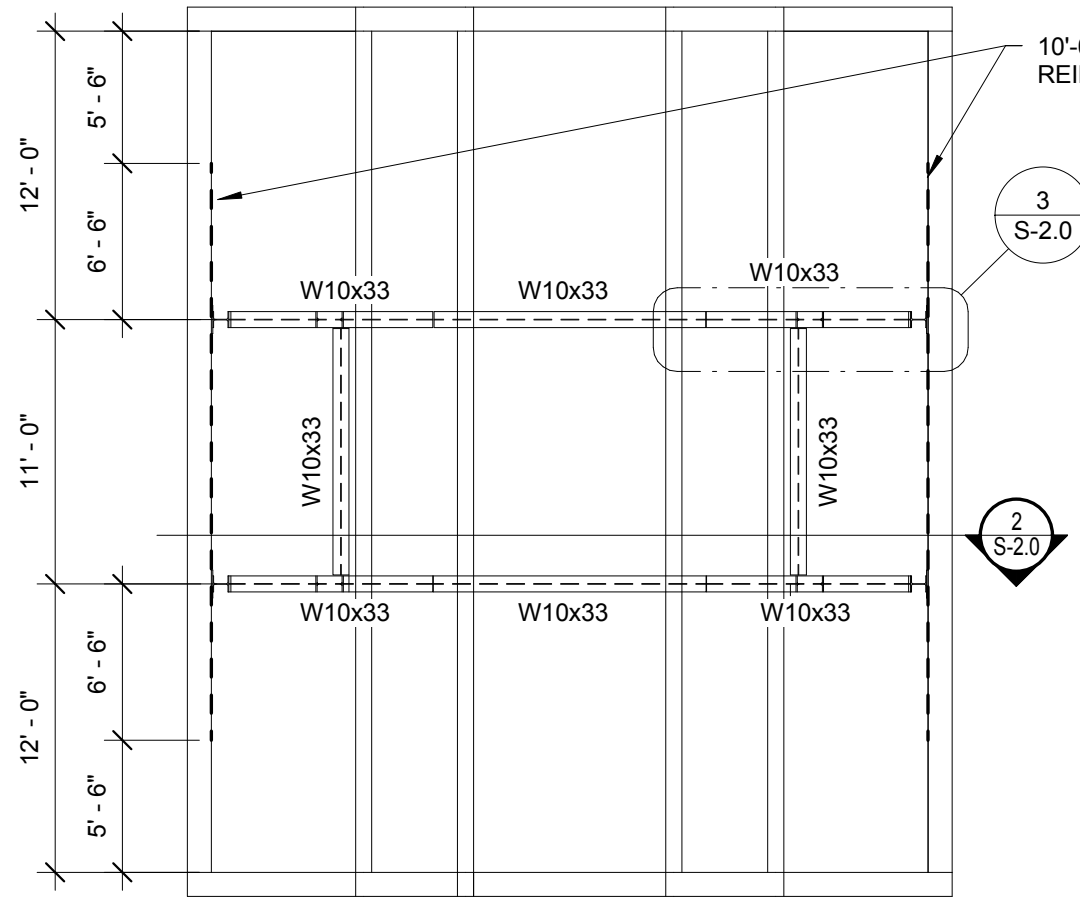
PLAN MODIFICATIONS: DATE:



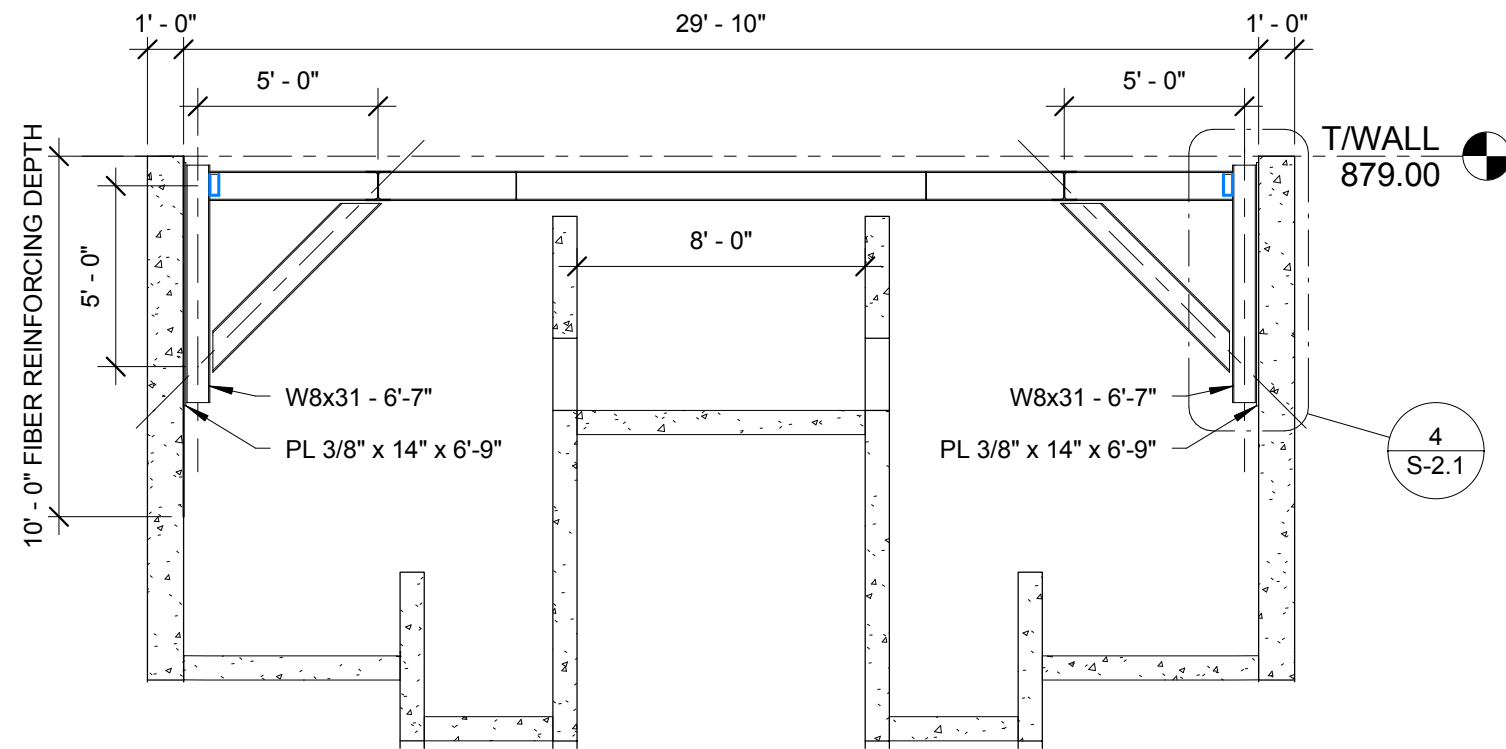
Toll Free (800) 242-8511  
 Milwaukee Area (414) 259-1181  
 Hearing Impaired TDD (800) 542-2289  
 www.DiggersHotline.com

SHEET TITLE:  
**STRUCTURAL SECTIONS**

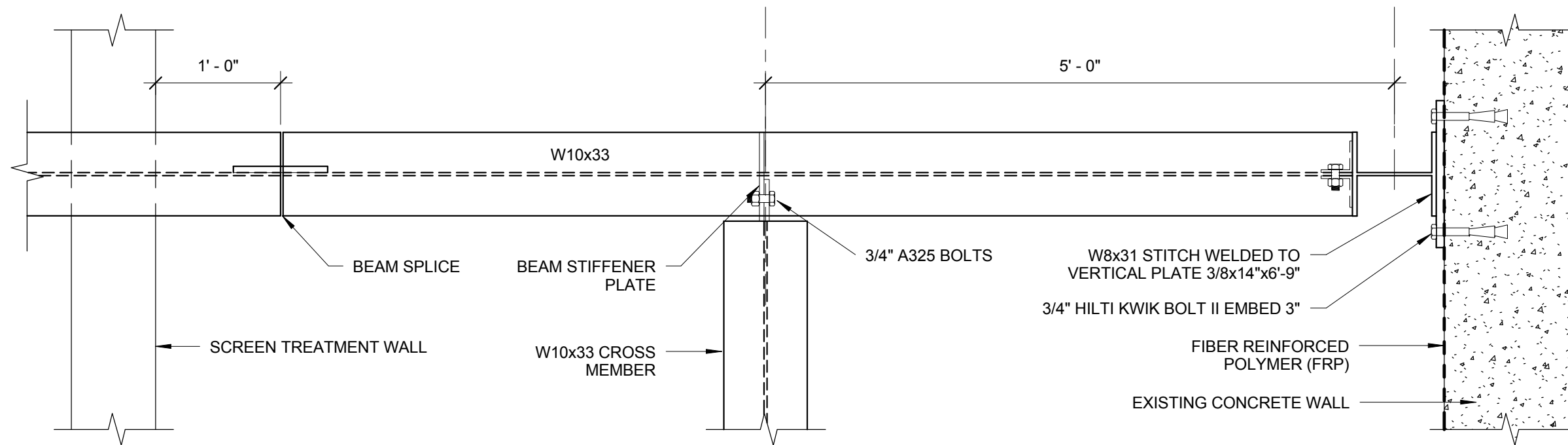
SHEET NUMBER:  
**S-2.0**



1 PLAN  
 1/8" = 1'-0"



2 SECTION  
 3/16" = 1'-0"



3 PLAN DETAIL  
 1" = 1'-0"

- CIVIL ENGINEERING
- SURVEYING & MAPPING
- CONSTRUCTION SERVICES
- WATER RESOURCES
- PLANNING & DEVELOPMENT
- TRANSPORTATION ENGINEERING
- STRUCTURAL ENGINEERING
- LANDSCAPE ARCHITECTURE

MADISON REGIONAL OFFICE  
 161 HORIZON DRIVE, SUITE 101  
 VERONA, WISCONSIN 53593  
 608.848.5060 PHONE | 608.848.2255 FAX

MADISON | MILWAUKEE  
 KENOSHA | APPLETON  
 www.jsdinc.com

SERVICES PROVIDED TO:  
**CITY OF MADISON**

PROJECT:  
**ARBORETUM POND #3 - STRUCTURE**

PROJECT LOCATION:

JSD PROJECT NO.: 14-6456

SEAL/SIGNATURE:

ALTHOUGH EVERY EFFORT HAS BEEN MADE IN PREPARING THESE PLANS AND CHECKING THEM FOR ACCURACY, THE CONTRACTOR AND SUBCONTRACTORS MUST CHECK ALL DETAIL AND DIMENSIONS OF THEIR TRADE AND BE RESPONSIBLE FOR THE SAME.

DESIGN: Designer \_\_\_\_\_  
 DRAWN: Author \_\_\_\_\_  
 APPROVED: Approver \_\_\_\_\_

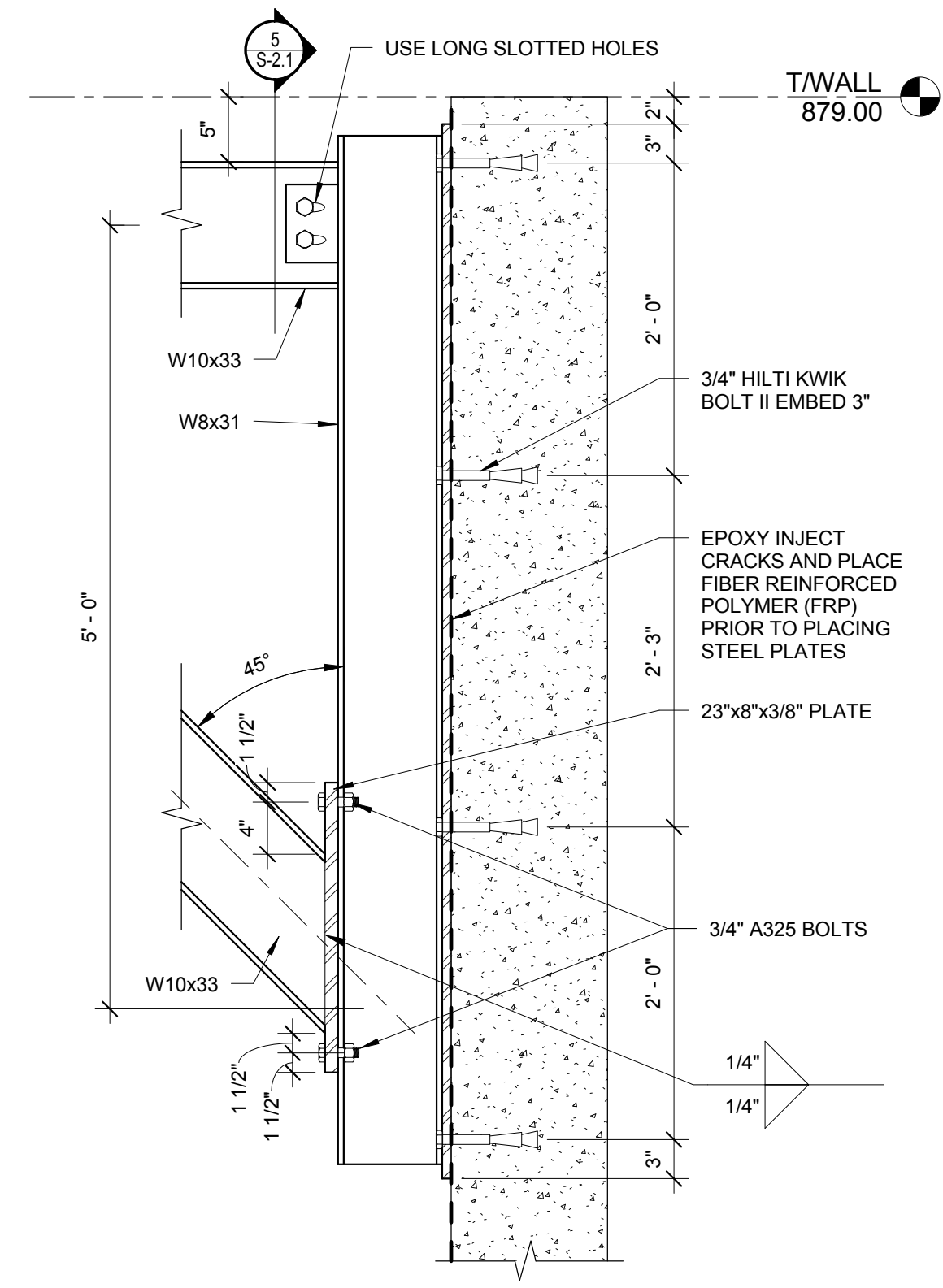
PLAN MODIFICATIONS:	DATE:



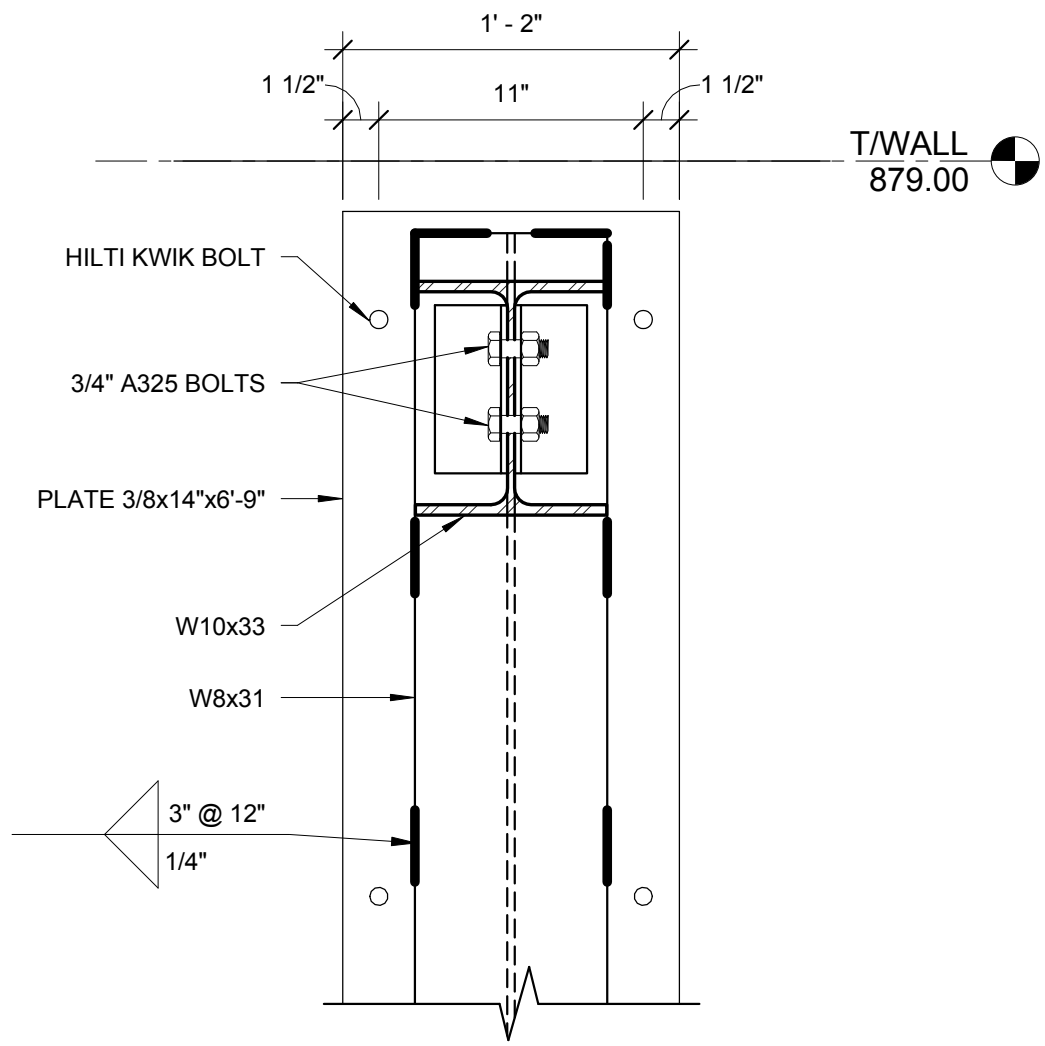
Toll Free (800) 242-8511  
 Milwaukee Area (414) 259-1181  
 Hearing Impaired TDD (800) 542-2289  
 www.DiggersHotline.com

SHEET TITLE:  
**STRUCTURAL DETAILS**

SHEET NUMBER:  
**S-2.1**



**4 SECTION DETAIL**  
 1" = 1'-0"



**5 CONNECTION DETAIL**  
 1 1/2" = 1'-0"

8/10/2015 10:55:05 AM

I:\2014\146456\DWG\14-6456\_pond #3\_tank.rvt

THESE PLANS AND DESIGNS ARE COPYRIGHT PROTECTED AND MAY NOT BE USED IN WHOLE OR IN PART WITHOUT THE WRITTEN CONSENT OF JSD PROFESSIONAL SERVICES, INC.